

# Schnellmontagekran

Fast self erecting tower crane

*Grue à montage rapide*





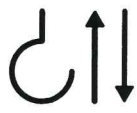





## TK 2510/3

DIN 15018 H1 B3



# TK 2510/3

<b>Leistungsdaten</b> Performance data Details techniques	<b>Ausladung (m)</b> Radius Portée	<b>Tragkraft (kg)</b> Lifting capacity Capacité	<b>Max. Tragkraft (kg)</b> Lifting capacity max. Capacité max.
<b>Ausleger 25 m</b> Jib 25 m / Flèche 25 m	25	1000	3000

<b>Geschwindigkeiten</b> Speeds Vitesses	<b>Heben</b> Lifting Levage				
		m/min.	kg	m/min.	kg
		45	1500	-	-
		22	3000	-	-
		5	3000	-	-
<b>Katzfahren</b> Trolleying / Distribution		m/min.	20/40		
<b>Drehen stufenlos</b> Slewing / Orientation		r.p.m.	0,1 ↔ 0,9		

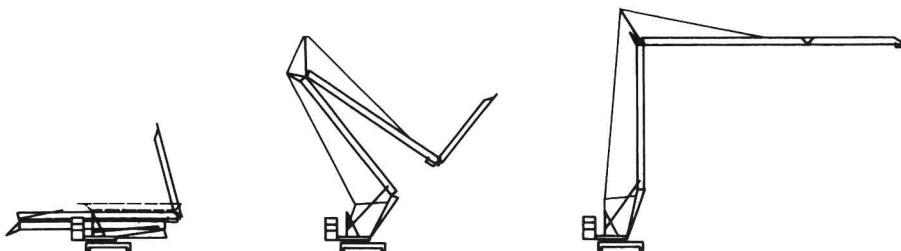
## Allgemeine technische Daten

General technical data  
Details techniques généraux

<b>Konstruktionsgewicht</b> Weight / Poids de la grue	kg	8.000	<b>Ges. elektr. Leistung</b> Motor power / Puissance total	kW	17
<b>Gegengewicht</b> Counterweight / Contrepoids	kg	12.500	<b>Kabelquerschnitt</b> Cable section / Section du câble	mm <sup>2</sup>	5 x 10
<b>Drehradius</b> Slewing radius / Rayon de giration	m	2,5	<b>Netzstrom</b> Mains supply / Réseau	V/Hz	400/50
<b>Max. Eckdruck</b> Corner load / Pression	kN	115			
<b>Spindelabstand</b> Support basis / Ecartement	m	3,8x3,8			

## Montage

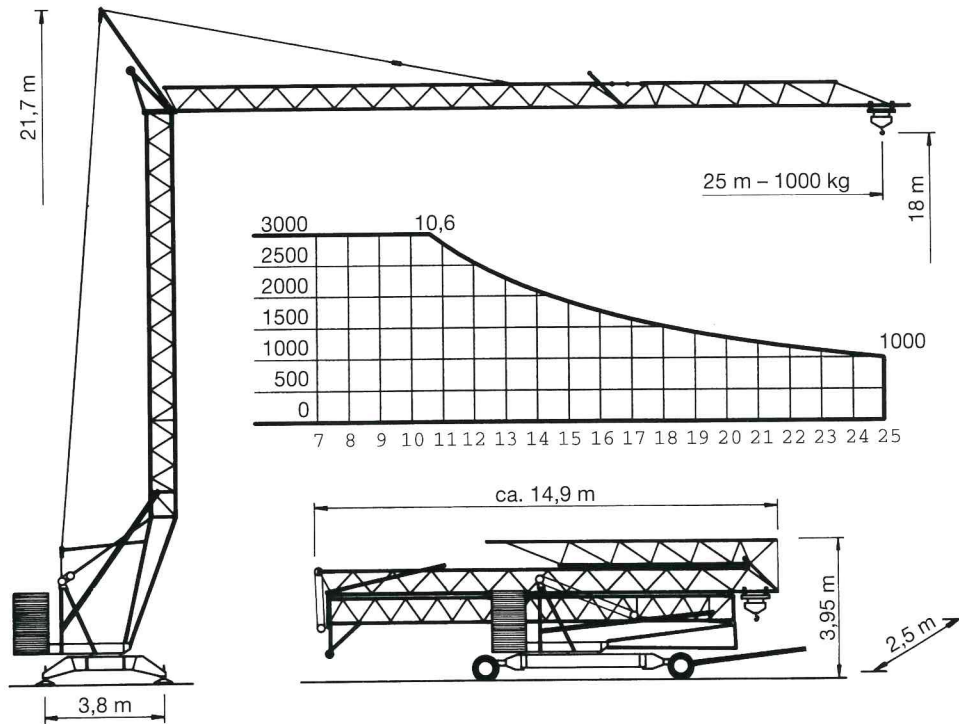
Erection  
Montage





# TK 2510/3

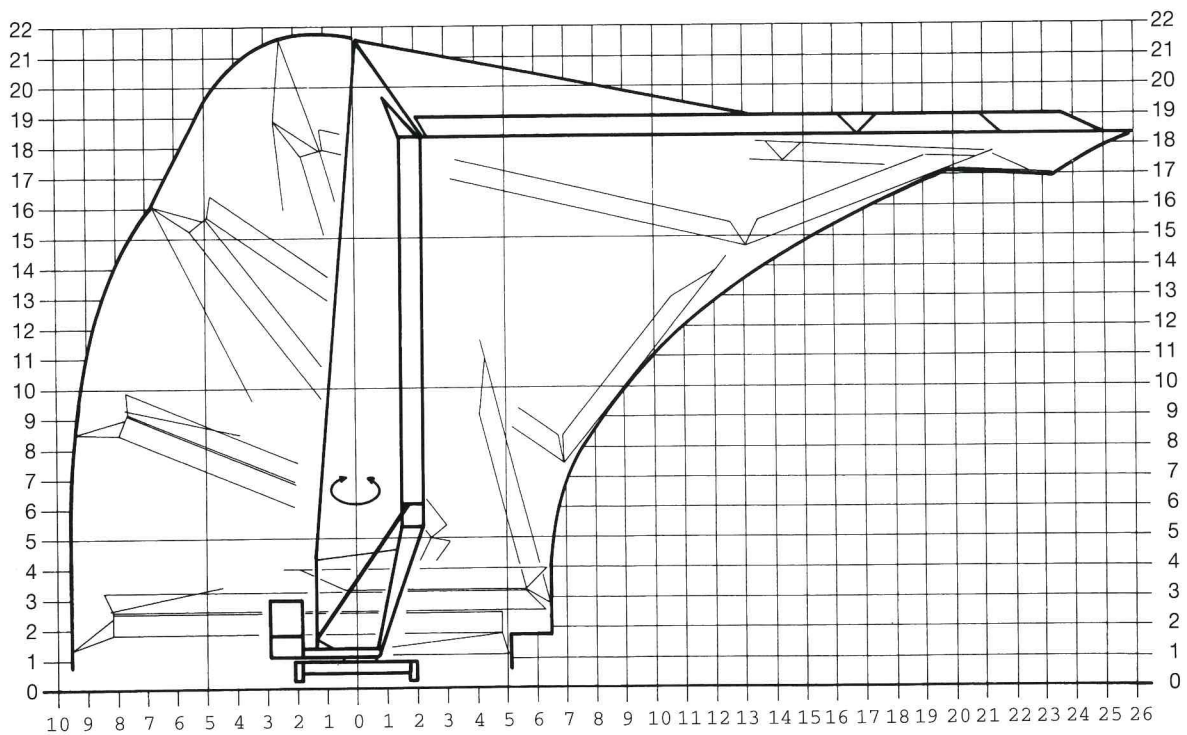
**BGL 2102 - 0025**  
**25 m - 1000 kg**  
**max. - 3000 kg**



## Montage - Platzbedarfsdiagramm

Erection - Space required diagram

Montage - Surface utile





### **Besondere Merkmale**

- Mit 6,7 Tonnen Teilballast verfahrbar
- Montage über Einseiltechnik in 4 Minuten
- Auslegerluftmontage
- Automatische Abspindelvorrichtung
- Automatische Katzseilnachspannung
- Alle Antriebe frequenzgeregelt (stufenlos) oder polumschaltbar
- Turm und Ausleger feuerverzinkt

Technische Änderungen vorbehalten

### **Special Features**

- Movable with partial ballast of 6,7 tons
- Erection by single rope technique within 4 minutes
- Jib assembly above ground
- Automatic support device
- Automatic trolley cable rope tension device
- All drives frequency-controlled or pole-changing
- Hot galvanized tower and jib

Subject to change without notice

### **Caractéristiques particulières**

- Transportable avec lest partiel de 6,7 tonnes
- Montage par technique monocâble en 4 minutes
- Montage de la flèche en l'air
- Mise en place automatique des sabots
- Tendeur automatique de chariotage
- Tous les entraînements a fréquence contrôlée ou a changement de pole
- Tour et flèche galvanisés à chaud

Sous réserve de modification

## **KSD Kransysteme GmbH**

Schillerstraße 30 - 38  
 D-66482 Zweibrücken  
 Telefon: (0 63 32) 92 18 - 0  
 Telefax: (0 63 32) 92 18 - 40  
 e-Mail: ksd@ksd-kransysteme.de  
 Internet: www.ksd-kransysteme.de

**Überreicht durch** / Presented by / *Présenté par:*

