

Schnellmontagekran
Fast self erecting tower crane
Grue à montage rapide














TK 4512

DIN 15018 H1 B3



TK 4512

Leistungsdaten Performance data Details techniques	Ausladung (m) Radius Portée	Tragkraft (kg) Lifting capacity Capacité		Max. Tragkraft (kg) Lifting capacity max. Capacité max.	
					
Ausleger 34 m Jib 34 m / Flèche 34 m	34	1900	1850	2500	5000
Ausleger 40 m Jib 40 m / Flèche 40 m	40	1500	1450	2500	5000
Ausleger 45 m Jib 43 m / Flèche 43 m	45	1250	1200	2500	5000

Geschwindigkeiten Speeds Vitesses	Heben Lifting Levage			m/min.	kg	m/min.	kg
					→→→	60	1500
→→	30	2500	15		5000		
→	6	2500	3		5000		
Katzfahren Trolleying / Distribution			m/min.	20/40			
Drehen stufenlos Slewing / Orientation			r.p.m.	0,1 ↔ 1,0			
Kranfahren Traveling / Translation			m/min.	30			
Auslegerverstellen Jib luffing / Relevage flèche			0 - 45°	30 sec.			

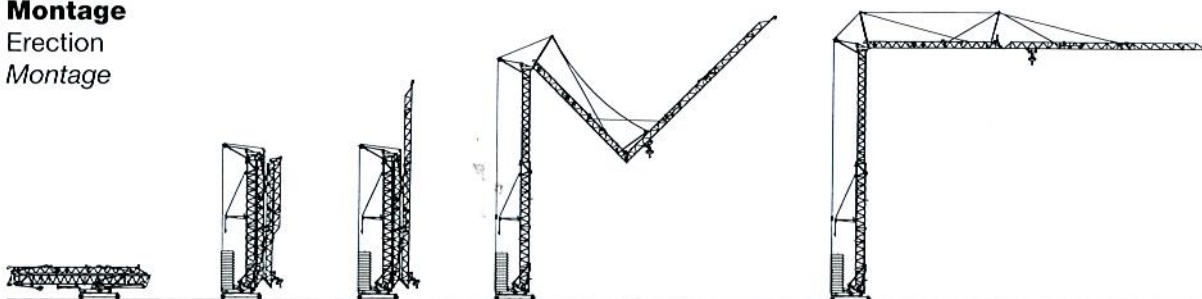
Allgemeine technische Daten

General technical data
Details techniques généraux

Konstruktionsgewicht Weight / Poids de la grue	kg	18.000	Spindelabstand Support basis / Ecartement	m	4,2 x 4,2
Gegengewicht I * Counterweight I / Contrepoids I	kg	36.000	Spurweite Track gauge / Voie	m	4,0
Drehradius I * Slewing radius I / Rayon de giration I	m	2,3	Ges. elektr. Leistung Motor power / Puissance total	kW	29
Max. Eckdruck Corner load / Pression	kN	360	Kabelquerschnitt Cable section / Section du câble	mm ²	5 x 16
			Netzstrom Mains supply / Réseau	V/Hz	400/50
* Betriebsanleitung beachten! Consider instruction manual! / Observer manuel de service!					

Montage

Erection
Montage



TK 4512

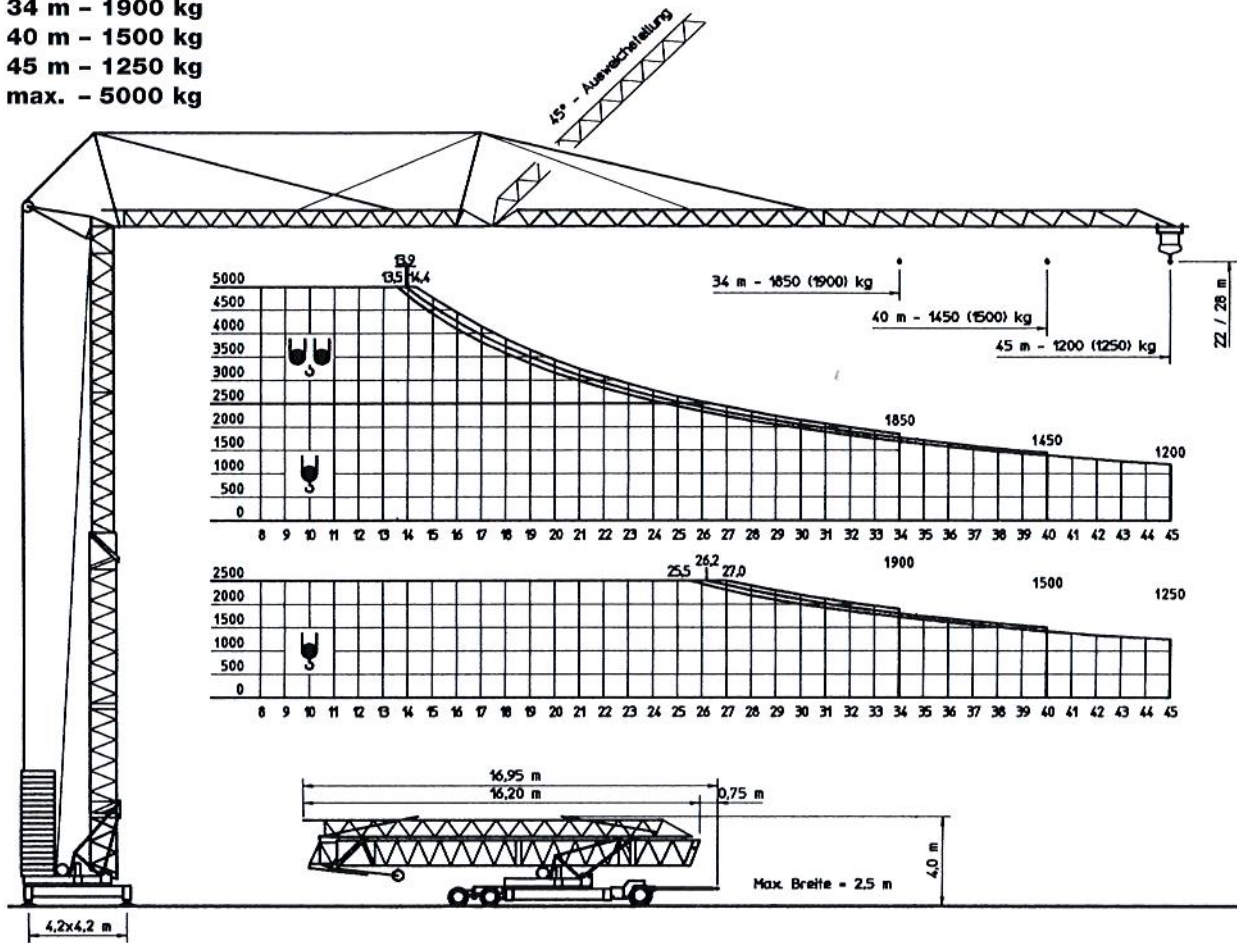
BGL 2105 - 0080

34 m - 1900 kg

40 m - 1500 kg

45 m - 1250 kg

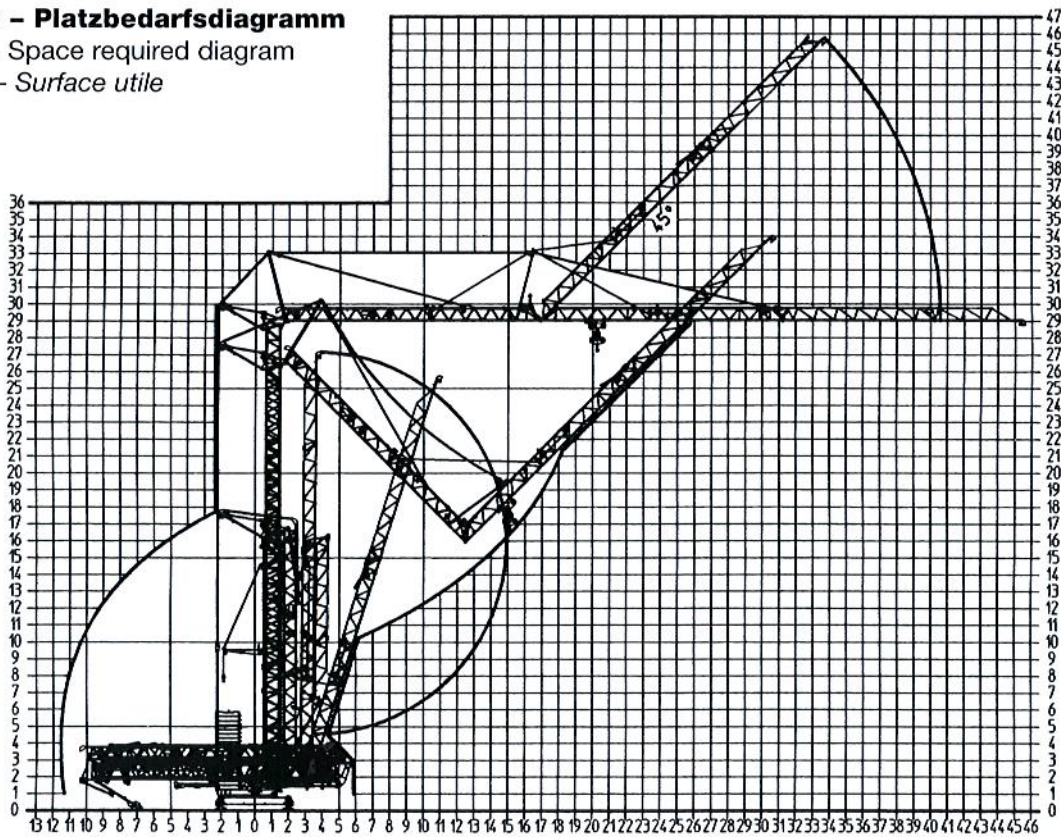
max. - 5000 kg



Montage - Platzbedarfsdiagramm

Erection - Space required diagram

Montage - Surface utile





Besondere Merkmale

Komplett straßenverfahrbar mit Turm (28 m) und Ausleger (45 m) ohne Teiledemontage

Auslegerluftmontage mit minimalem Platzbedarf

Während Montage um 360° schwenkbar

Halbausgefahrene Betriebsstellung des Turmes

Auslegerverstellung 0 - 45° (siehe Diagramm)

Turm und Ausleger feuerverzinkt

Hub- und Drehwerk frequenzgeregelt (stufenlos)

Technische Änderungen vorbehalten

Special Features

Road transport with complete tower (28 m) and jib (45 m) without sectional disassembly

Jib assembly above ground with little space required

360° rotatable during assembly

Can operate with half telescoped tower

Jib luffing 0 - 45° (see diagram)

Hot galvanized tower and jib

Hoisting drive and slew drive frequency controlled

Subject to change without notice

Caractéristiques particulières

Transport complet avec tour (28 m) et flèche (45 m) sans aucun démontage

Montage de la flèche en l'air avec un besoin de surface réduite

Rotation possible à 360° pendant le montage

Prêt à l'emploi à mi-extension de la tour

Relevage de la flèche 0 - 45° (att. diagramme)

Tour et flèche galvanisés à chaud

Levage et rotation avec variateur

Sous réserve de modification

KSD Kransysteme GmbH

Schillerstraße 30 - 38

D-66482 Zweibrücken

Telefon: (0 63 32) 92 18 - 0

Telefax: (0 63 32) 92 18 - 40

e-Mail: ksd@ksd-kransysteme.de

Internet: www.ksd-kransysteme.de

Überreicht durch / Presented by / Présenté par: