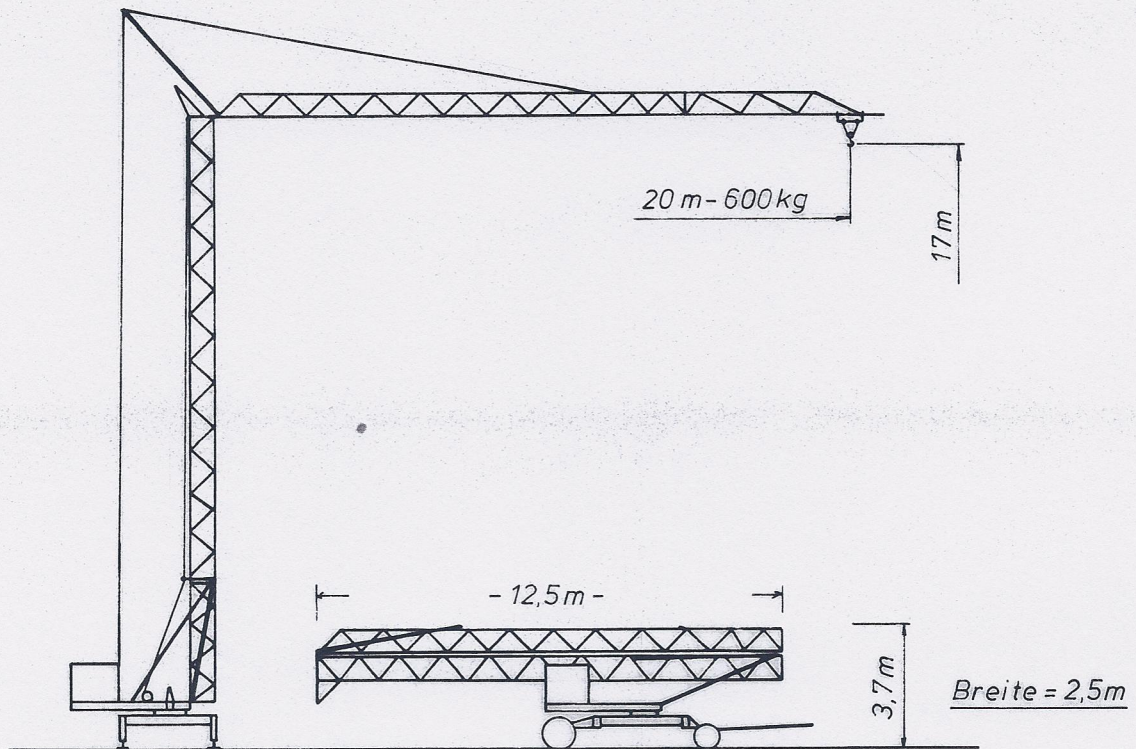






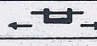



# TK 2060



Mit gesamten Gegengewicht straßenverfahrbar

<u>Leistungsdaten</u>	Ausladung (m)	Tragkraft (kg)	Max. Tragk. (kg)	
	20	600	1250	
<u>Geschwindigkeiten</u>	Heben	m/min	kg	
	 		32	650
	 		8	1250
	Katzfahren		m/min	30
	Drehen		U/min	0,9
<u>Allgemeine technische Daten</u>	Standfläche	m	3,0 x 3,0	
	Drehradius	m	2,80	
	Konstrukt.gew.	kg	4000	
	Gegengewicht	kg	5200	
	Ges. Motorleist.	kW	~ 6	
Kabelquerschnitt	380 V	4 x 6"		

Techn. Änderungen vorbehalten!